

# CAST

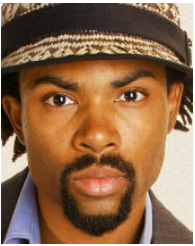


**Benjamin Horen+** is thrilled to be making his second appearance at MetroStage. He has performed most recently at Studio Theatre's Second Stage in *Jerry Springer: The Opera* and as an understudy for two roles in *Grey Gardens*. He has also performed in *The Stephen Schwartz Project* (MetroStage), understudied the role of Cosme in *Souvenir* (Studio Theatre) and was seen in *Celebrate Broadway!* (The Kennedy Center). His other credits include *Frederic (Pirates of Penzance)*, *Dick (Dames at Sea)*, *Cornelius (Hello Dolly!)* and *Schroeder (You're a Good Man, Charlie Brown!)*. Benjamin is also a choral director in Fairfax County Public Schools and teaches at the U.S. Performing Arts Camps at The George Washington University. Special thanks to Mary Lincer, Shaun

Moorman, Dr. Geoff Stephenson, Robert Pullen, and all of my friends. You are such a blessing!



**William Hubbard\*** is a composer, musician, actor, vocalist and arranger, proud and honored to be at MetroStage again. William performed in David Murray & Amiri Baracka's *Sisyphus Syndrome* in Paris and Milan and he last appeared in *Pearl Bailey...By Request* (MetroStage) with Roz White. MUSIC DIRECTION: *Piano Lesson* (Lehigh Valley University), *Spunk* (Atlas Theatre), *Three Sistahs* (Atlanta's Horizon Theatre) and *Two Queens One Castle* (MetroStage) which included his compositions. William made his Equity Actors debut in *All Night Strut* (MetroStage). He is a Helen Hayes Award winner for "Best Musical Direction" for *Crowns* (Arena Stage) and he received a nomination for his work in *Mahalia*. His score for *Three Sistahs* also garnered him a Hayes nomination along with Tom Jones and Janet Pryce and was part of the New York Festival of New Musicals. He is internationally known for his hymn "I Love You Lord Today" published in the New African American Heritage Hymnal. Thanks to God for His many blessings and great love and mercy!

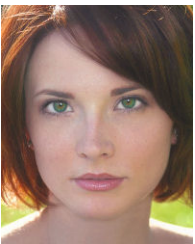


**Jahi Kearse\*** This native of Atlanta is thrilled to make his MetroStage debut. He was last seen in DC in Studio Theater's production of *TopDog/UnderDog*. Other regional credits include: Maurice Hines' *Yo' Alice, Ain't Misbehavin'*, Debbie Allen's *Souls Possessed*, Woodie Guthrie's *American Song*, *The Glass Menagerie*, *Suessical*, *Dream Girls*, *A Raisin in the Sun*, *5 Guys Named Moe*, *Waiting for Godot* and *Slam* (written by Tom Johns). Musical Directing credits include *Androcles and the Lion*, produced by The Alliance Theater; *Atlantia*, produced by Hal 4 in Rotterdam; *Phalms 13*, produced by 7 Stages Theater; *Soweto Soweto*, produced by The Windybrow Theater in South Africa; *Conversation With Ice*, produced by Made in da Shade Theater in Amsterdam. Jahi has released a Soul

Blues album, *Memoirs of a BlueChild*, on sale now, and he is currently recording a new album called *Scarlet Stars*. Keep in contact with Jahi and stay up to date with his events at [www.myspace.com/jahi1](http://www.myspace.com/jahi1).



**Anthony Manough\*** is a graduate of The Duke Ellington School of the Arts and Howard University, in Washington, DC. Manough (pronounced May-No), as he is affectionately known, has been nominated for the prestigious Helen Hayes Award, in the category of Best Supporting Actor, for his work in the hit musical *God's Trombones*. He first appeared on Broadway in Disney's Tony Award winning *The Lion King* starring as Simba and Bonsai. He's also starred as Jesus and Judas in the Broadway millennium revival of *Jesus Christ Superstar*. He comments, "I am very grateful to be apart of the MetroStage experience. I pray you enjoy. Bless. Be blessed." Special thank you to you AEA, TWJ II, Carolyn G, and You DC MD VA for your love and support. To my friend and mentor Alvin D "Mike" Malone- I am here because of you.



**Gia Mora\*** THEATRE: *The Imaginary Invalid* (Shakespeare Theatre), *Chasing George Washington* (Kennedy Center), *Christmas Carol 1941* (Arena Stage), *She Stoops to Comedy* - Helen Hayes Nomination, Ensemble (Woolly Mammoth Theatre), *The Araboolies of Liberty Street* (Imagination Stage), *She Loves Me* (Arena Stage), *A Prayer for Owen Meany* - Helen Hayes Nomination, Supporting Actress (Round House Theatre), *A Midsummer Night's Dream* (Baltimore Shakespeare Festival), *Othello* (Colorado Shakespeare Festival), *The Women* (Arvada Center Theatre), *Picnic* (Theatre Aspen). TELEVISION: *Saving Corporate America* (pilot). UPCOMING: *God's Ear* (Rep Stage). Jazz vocalist for the Gia Mora Quartet. "Ti amo, Antonio!" [www.GiaMora.com](http://www.GiaMora.com)



**Rosalind "Roz" White\*** is a proud member of Actors Equity Association. TRAINING: Duke Ellington School of the Arts and Howard University. Backing/ Featured vocalist with Yolanda Adams, Gerald Levert and Stevie Wonder. Favorite theatre roles include Effie White in *Dreamgirls*, Mahalia Jackson in *Mahalia*, Woman of the World in *Blues in the Night* and Hanna in *Rejoice*. METROSTAGE: *Bricktop*, *Two Queens One Castle* and *Three Sistahs*. Earlier this season at MetroStage, Roz starred as Pearl Bailey in the critically acclaimed world premiere of her tribute cabaret *Pearl Bailey...By Request*. The piece was co-written by Thomas W. Jones II, with musical arrangements by William Knowles, and featured special guest William Hubbard. Love to

Mom, Michelle, Anthony Jai, King Elijah, John, and all my dear family and friends. God is Good!



**Lori Williams** is the lead vocalist for two Washington-based jazz ensembles (*Collaboration* and *Lori Williams & Friends*). A graduate of Hampton University, Lori is the wife of professional jazz bassist, Yusef Chisholm and the proud mother of two children, Lauren Vanessa and Yusef Khalil. The 2007 Superintendent's Arts Teacher of the Year, Lori is the Vocal Music Instructor at Wilson Senior High School and has directed several choirs in the US and abroad. She has performed with many internationally known recording artists such as Will Downing, Eli Saitoh, Maysa, Lloyd Price, Jerry Butler, Tony Terry and Sherry Winston. She also has done extensive studio recording and commercial work in the Metropolitan area and Japan. Lori last performed at MetroStage in *Isn't It Romantic* in 2008, *All*

*Night Strut* in 2005 and in Arts United of Washington's *Meet Me at the Cafe*. [www.lorijazz.com](http://www.lorijazz.com)

## BAND

**William Knowles (Piano/ Conductor)** is a graduate of Howard University and the University of Massachusetts. He hails from Milwaukee, Wisconsin. He was awarded the 2001 Helen Hayes Award for Best Musical Direction for *Dinah Was* (Arena Stage). Mr. Knowles was also the Musical Director for *All Night Strut*, *Ellington: The Life and Music of the Duke*, *King of Cool* and *Bricktop* at MetroStage. Mr. Knowles was nominated for the 2005 Helen Hayes Award for his work on *Tambourines to Glory*. He has recorded with poet Sonya Sanchez (*Full Moon of Sonya*) and Jimmy Jackson (*On My Way Home*, Blue Canoe records).

**Yusef Chisholm (Bass)** is a native Washingtonian and is one of the most innovative and stylistic bassists in both traditional and contemporary music. He formed Common Knowledge, a contemporary jazz ensemble and recording studio in 1995. Yusef has performed at numerous venues across the world and jazz festivals such as the Ghana Jazz Festival and Clifford Brown Jazz Festival. He played for Tom Jones' *Slam!* and for *Three Sistahs*, *All Night Strut*, *Two Queens – One Castle*, *Ellington*, *Bricktop* and *Cookin' at the Cookery* here at MetroStage. Other theatre performance credits are *Pippin*, *Tambourines to Glory*, *Once on This Island*, *Dinah Was*, *All Around the World*, and *A Mark Twain Murder Mystery*. Yusef released his debut CD, *Well Kept Secret*, this year. He is also the 2008 Agnes Meyers Outstanding Teacher of the Year.

**Greg Holloway (Drums)** is a native of Washington, D.C. EDUCATION: Howard University (Music Education/ Percussion Performance), Jazz Studies summer program at Eastman School of Music, University of LaVerne in Southern California (Masters in Education with an emphasis in Jazz Drumming/ Percussion Methodology and Masters in Science - Psychology). He was an Air Force Band drummer/percussionist and Musical Director of various ensembles. Greg produced the CD "Midnight Sun" which features Ellington alumnus Freda Payne. He has performed with several theater productions, Hank Jones, Carl Fontanna, Rob McConnell, Chuck Israel, Jim Pugh, Gene Bertinocini, Maguire Sisters, Sheri Lewis, Bruce Conti, Rich Little, Aretha Franklin and Jimmy Heath. He has also played various shows in Palm Springs and served as Timpanist with the Anchorage Symphony. Greg is also a member of the Percussive Arts Society and he is currently the Director of Percussion at Flint Hill School and adjunct jazz faculty at American University.

**Ron Oshima (Saxophone/ Flute)** Long time DC/Baltimore area music and theatre veteran. Past Theatre Lobby award winner and 2005 Helen Hayes Award nominee for sound design. Saxophonist in MetroStage's past productions of *Bricktop*, *Ellington* and *Harlem Rose*. Currently, lead alto sax for Northern Virginia's "Swing Shift" big band and alto and soprano principle for the "Annandale Saxophone Ensemble", as well as a contractor performing for corporate and private parties throughout the region. "Once again I'm in heaven working with William and these great players on another Tom Jones hit."

**Alvin Trask (Trumpet)**, originally from Baton Rouge, Louisiana, began playing trumpet at age nine. Alvin continued his studies throughout high school and college. At an early age, Alvin knew that music would be his life's profession. He earned a Bachelor of Music Degree from Louisiana State University, Master of Music Degree from Howard University and additional studies at The Thelonious Monk Institute in Dolo, Italy. As an educator, Alvin is currently an Associate Professor of Music at Montgomery College and conducts the instrumental music program at Georgetown Preparatory School. Previously, he chaired the Performing Arts Department at St. Stephen's and St. Agnes School. Alvin remains an active performer in the Washington Metropolitan area and has shared the bandstand with a countless number of legendary artists throughout his career. Alvin has performed in *Pirates Of Penzance*, *Ain't Misbehavin'*, *Newsies*, *And The World Goes Round* and *Hair*.

## **PRODUCTION & DESIGN**

**Thomas W. Jones II\*\* (Director/ Author)** has directed, written, and performed in more than 200 plays worldwide. In 1978, Tom founded Jomandi Productions, where, as Co-Artistic Director and Producing Director, Tom led Jomandi to become the third largest African-American theatre company in the United States. His work as writer, director, and actor has been acclaimed nationally and internationally. His work has received 42 Helen Hayes Award nominations winning 12 awards, including Best Director for Samm Art Williams' *Home* and his own *Bessie's Blues*. He has also received 3 New York Audelco Award nominations, the Dramalogue Award, the San Diego Critics Award, NAACP Phoenix Award, among others. In 2000, Tom and his co-founders left Jomandi to create the entertainment company VIA International Artists, Inc. and subsequently VIA Theatrical. His most recent work includes *The Bluest Eye*, *Bricktop*, *Point of Revue*, *Two Queens One Castle*, *Cool Papa's Party* and he has worked on an after hours cabaret series based on Delores Bundy's *Brown Sugar Diaries*.

**William Knowles (Music Director/ Composer)** see under Band

**Maurice Hines (Choreographer)** As Performer - BROADWAY: *Uptown... its Hot* (Tony Nomination); NATIONAL TOUR: Jelly Roll Morton in *Jelly's Last Jam*, Nathan Detroit in *Guys and Dolls*, *Eubie!*, *Bring Back Birdie* with Chita Rivera and Donald O'Connor, *Sophisticated Ladies*, *Harlem Suite*; FILM: Francis Ford Coppola's *The Cotton Club*. As Director/Choreographer - BROADWAY: *Uptown... its Hot*, *Hot Feet!*; NATIONAL TOUR: *Satchmo*, *Harlem Suite*; INTERNATIONAL: *Havana Night* (Cuba), *The Red Shoes* (Dominican Republic); NY: *The Radio City Spectacular*. All of Mr. Hines' performances are dedicated to his mother Alma, and his manager Stanley Kay.

**Carl Gudenius\*\*\* (Set Designer)** holds an M.F.A. in Design from Wayne State University. In addition to teaching scenic and lighting design at GWU and directing its Graduate Design Program, he is the resident designer for The Washington Stage Guild; he is also Principle Designer for DCP/Design Concept Presentations, LLC. Recent work has included Art Direction/Production Design for ABC (including *Good Morning America* and *Nightline*), C-SPAN, PBS (including *In Performance at the White House*), Discovery. He is also Production Designer for The US Army's touring pageant *Spirit of America*. His scenic and lighting work has been seen at many Washington theatres including The Kennedy Center, Olney Theatre, MetroStage (*All Night Strut*, *Last 5 Years*), Church Street Theatre, Horizons Theatre and Interact Theatre. He owns Pro Scenic, Inc., a union (IATSE local 22) production shop that provides full fabrication services to a diverse clientele of theatrical, corporate and video producers.

**Kristina Lucka (Costume Designer)** comes from Bratislava, Slovakia and has been in the United States for over ten years. She graduated with an MFA in costume design from The University of Maryland. In the past, she has worked for Arena Stage as a wardrobe manager and for the Shakespeare Theatre Company as a costume design assistant. Kristina is thrilled to be part of the creative team for the world premiere of *Cool Papa's Party*.

**Terry Smith (Lighting Designer)** is based out of Philadelphia, PA and is happy to be returning to MetroStage after designing *Musical of Musicals (the Musical)*. He was most recently back in DC programming moving lights for *The Music of Andrew Lloyd Weber* at The Kennedy Center. Favorite designs include: *Skin Deep* by Inish Nua, *Ad Shock* by Brian Sanders and *A Howl* by Crescendo Theatre Company. Terry is also the production manager for Azuka Theatre Collective, and the master electrician for Philadelphia Theatre Company.

**Steve Baena (Sound Engineer)** is the owner/ head engineer of Funkymonkeyboymusic LLC, a Maryland-based sound company. After many years of doing this for fun, he finally got an education. Since graduating from Omega Studios engineering and recording school, Steve has managed to make a living out of this business. His work scopes UK nightclubs to the US capitol building and most things in between. This is his eleventh production at MetroStage and is happy to be back again.

**Jessica Lee Winfield\*** (*Stage Manager*) Credits include *The Stephen Schwartz Project*, *Three Sistas*, *tick, tick...BOOM!*, *Cookin' at the Cookery* and *ROOMS* (MetroStage), *Raisin the musical* and *Ragtime* (Morgan State University). She is also a freelance lighting designer and theatre electrician. She currently works at Arena Stage as an electrician and received Honorable mention in Broadwayworld.com for her design for Run of The Mill's production of *Blood Wedding*. Other design credits include *Man of La Mancha* (Spotlighters Theatre) *Miss Evers Boys*, *Black Nativity*, *Story Train* (Morgan State University), *Night of January 6*, *Dreamgirls*- Assistant Lighting Designer (ARTSCENTRIC) and *Isn't It Romantic* (MetroStage). She would like to thank her mother and sister for being supportive, Dannielle and Tonisha Keyinta for always coming through for her and Shirley Basfield Dunlap and Cheryl Williams for being great teachers and mentors.

**Dannielle Hutchinson+** (*Assistant Stage Manager*) is pleased to return to MetroStage for a second season. Her previous assistant stage management credits include *Three Sistas*, *tick, tick...BOOM!*, *Cookin' at the Cookery*, *The Stephen Schwartz Project* and *ROOMS* (MetroStage); *Ragtime* and *Raisin the musical* (Morgan). She graduated from Morgan State University in 2006 with BA in Theatre Arts. She would like to thank Jessica and Carolyn for this wonderful opportunity.

**Brandon Guilliams** (*Technical Director*) has built sets for Washington Shakespeare Company, JourneymanTheatre, Actors Theatre of Washington, Imagination Stage, Theatre J, Kennedy Center, as well as MetroStage. He also designed MetroStage's Nat King Cole and Duke Ellington shows. He got his start at the West End Dinner Theatre where he did it all from Kitchen Manager to tech to actor. Brandon's roots are in cooking as he has an Associates degree in culinary arts from Johnson and Wales University. He also currently works at the Kennedy Center answering the information line. Enjoy!

**Kevin Laughon** (*Production Manager*) has worn many hats at MetroStage for over four years. He works on the technical teams at many DC area theatres. A graduate of Syracuse University, he is also an actor/singer/dancer and an accomplished choreographer/teacher who has worked at local theatres, schools and dance studios for over 15 years. Kevin recently performed in *The Producers* at Toby's. Films he worked on recently include *State of Play* (with Ben Affleck) and *Night at the Museum 2*.

**Carolyn Griffin** (*Producing Artistic Director*) has been with MetroStage since its founding in 1984 and has produced over sixty mainstage productions, including four plays and three musicals that were world premieres. She is committed to producing the best contemporary writing and showcasing the best regional artists for a broad-based audience from the Washington metropolitan area. She is the co-founder of the Alexandria Arts Forum, which she chaired for five years, and has served on many regional panels for area arts commissions. Awards include the Actors' Center Award of Distinction, the Cultural Affairs Award from the Alexandria Commission for Women, the Award of Harmony from the Alexandria Harmonizers and the 2005 ALEX Award. She is on the Board of The Playwrights Forum and was chosen by the Canadian Embassy and the Helen Hayes Awards to travel to Canada in 2004 as part of the Canadian/Washington Theatre Partnership. She holds a Masters degree in Psychology from Catholic University and an MBA from Georgetown University. Her four children live in Washington DC, New York City, Savannah, Georgia, and Alexandria.

\*Member of Actors Equity Association (AEA). Founded in 1913, AEA represents more than 45,000 actors and stage managers in the United States. Equity seeks to advance, promote and foster the art of live theater as an essential component of our society. Equity negotiates wages and working conditions, providing a wide range of benefits, including health and pension plans. AEA is a member of the AFL-CIO and is affiliated with FIA, an international organization of performing arts unions.

\*\*Member of the Society of Stage Directors and Choreographers, Inc. (SSDC), an independent national labor union.

\*\*\*Member of The International Alliance of Theatrical Stage Employees (IATSE), United Scenic Artists #829.

+Equity Membership Candidate (EMC.)